

Ponceau staining

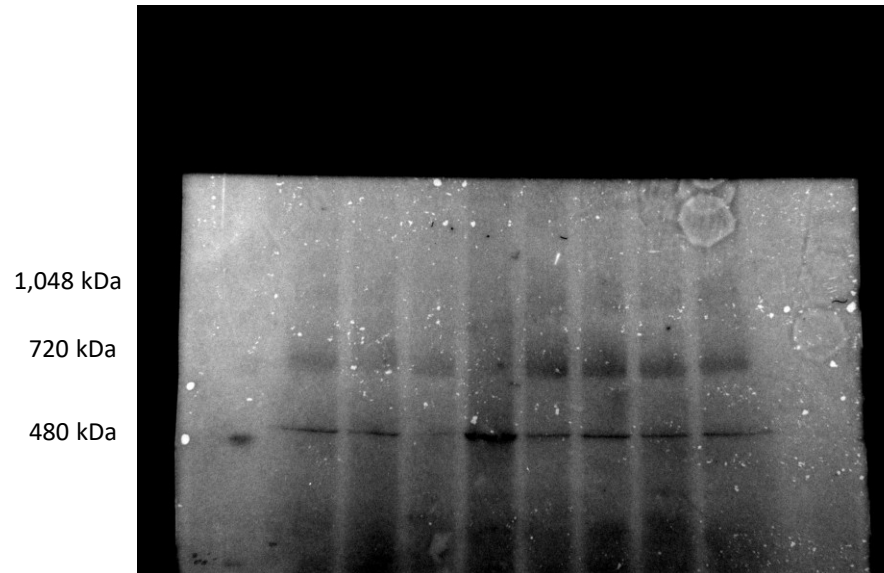


Figure 2, Figure supplement 2, Source Data 1. Original Ponceau-stained membrane corresponding to Figure 2G. Lanes 1–3 correspond to U2OS cells untreated, treated with metformin (16 h, 10 mM), and treated with metformin (72 h, 10 mM), respectively. Lane 4 corresponds to ATP5I knockout KP-4 cells, and lanes 5–8 correspond to KP-4 cells under the following conditions: untreated, metformin (16 h, 10 mM), metformin (72 h, 10 mM), and rotenone (16 h, 50 nM), respectively. Molecular weight marker positions are annotated manually to indicate the apparent size of the detected bands.